

* MG TWO *

RULES: ORPCI IMG Rules

COURSE DESIGNER A Willis

START POSITION: Standing with loaded handgun holstered and loaded rifle at low ready or muzzle down in separate dump barrels. Door open on start. (1G Handgun Start = Standing with loaded handgun holstered with hands relaxed at sides. PPC Start = Standing with stock on belt, muzzle downrange, loaded carbine held in both hands with safety on.)

STAGE PROCEDURE

On signal engage ½ scale paper with rifle only.
Engage full scale paper with handgun only.
Engage steel with shotgun only. The firearm in use must be grounded muzzle down in separate barrel/box prior to retrieving next firearm.
Engage all tgts respecting fault lines.

All walls, doors, barrels, snow fence walls are hardcover from the ground up unless otherwise specified.

SCORING

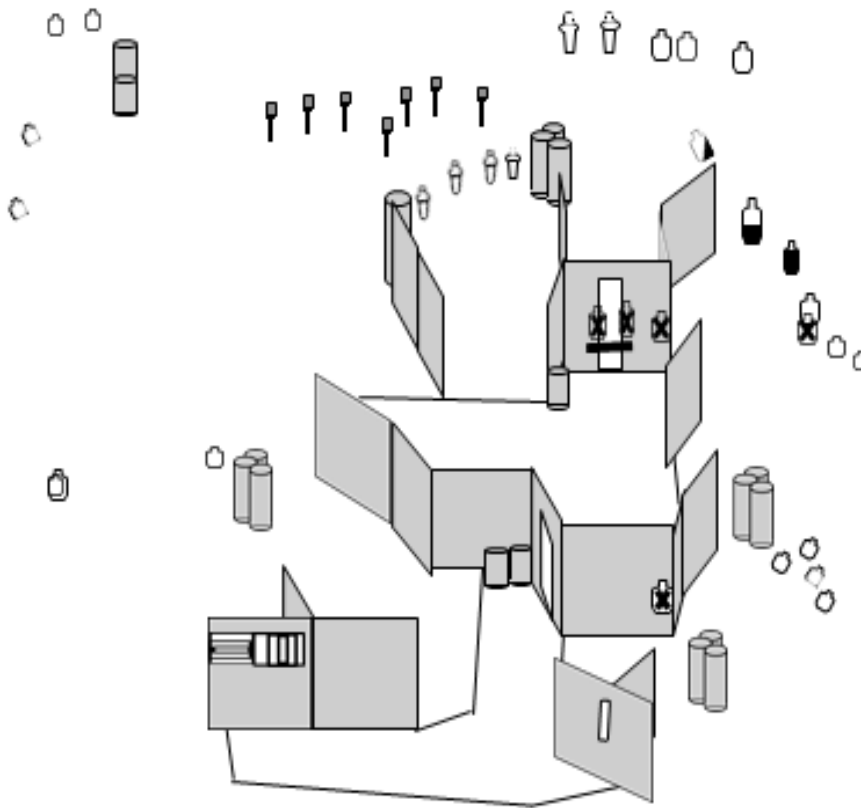
SCORING : ORPCI IMG rules

TARGETS: 12 ½ scale IPSC paper
- 7 full scale IPSC paper
- 13 plates

SCORED HITS: YES

START-STOP: Audible - Last shot

PENALTIES: IMG,



BAY 2

RO NOTES: